



# Pre-meeting survey : Informal Learning

Eilif Trondsen

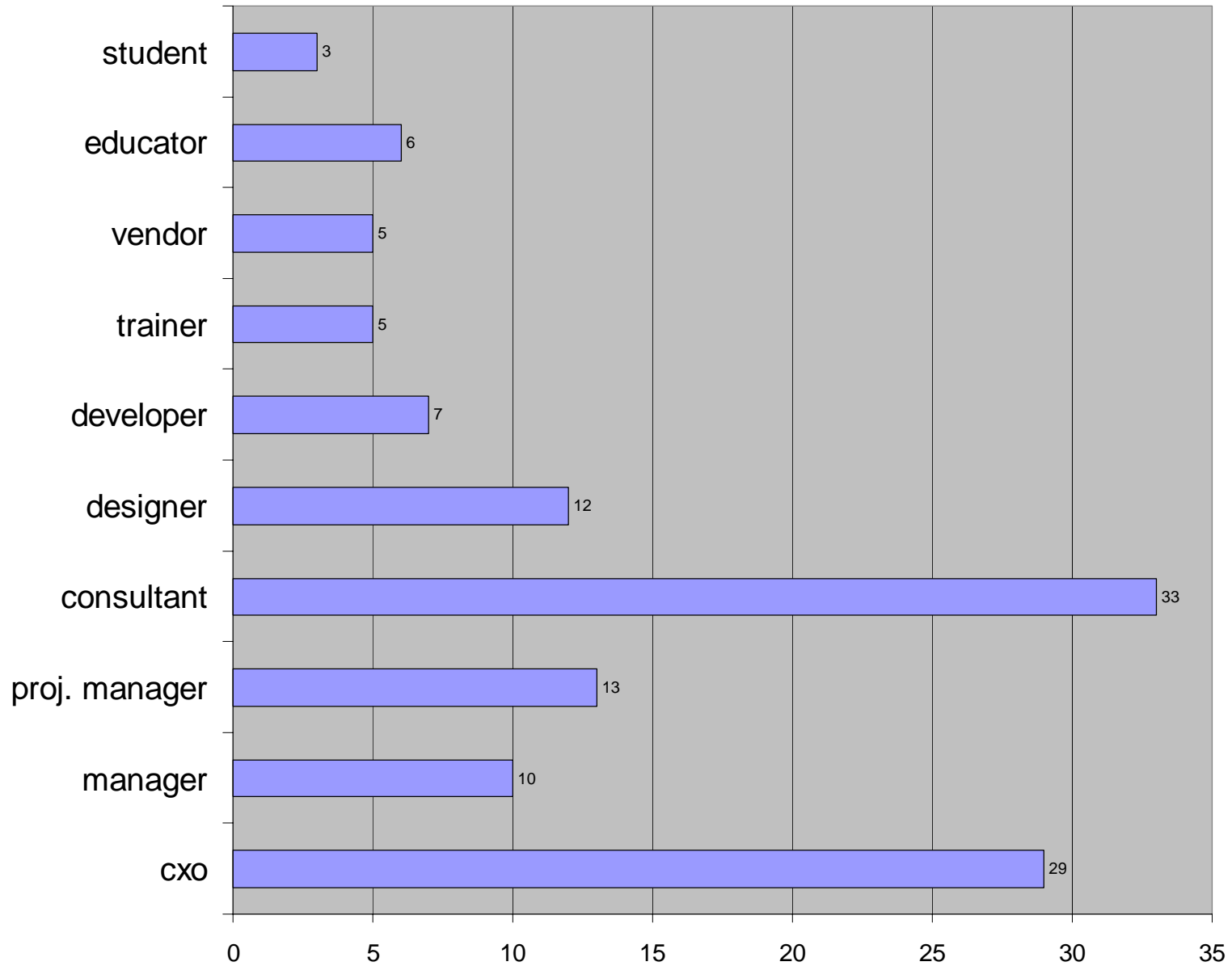
Richard Clark

May 16, 2003

# Survey background

- Web-based survey on e-LF site
- 2 weeks, 81 responses
  - 26 remote attendees
  - 26 in-person regulars
  - 4 attend either
  - 24 non-attendees

# Roles



# Corporate demographics

## Industry

Prof. services	9
Education	7
e-learning	32
IT	7
Misc. consultants	8
Retail	2
Training	2
+ 10 others...	

## Employees

1 - 49	46
50 - 99	3
100 - 499	10
500 - 999	2
1000 - 4999	9
5000 - 9999	4
10K+	6

# E-Learning usage

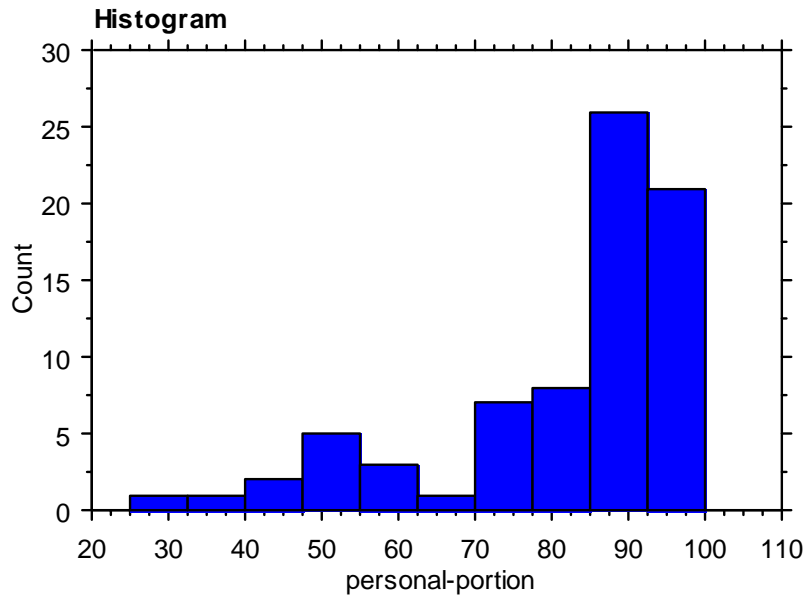
## How employed

Tactically	31
To customer/vendor	28
To employees	30
Using "advanced" tools (e.g. LCMS)	23
Just exploring	16
Don't know	5

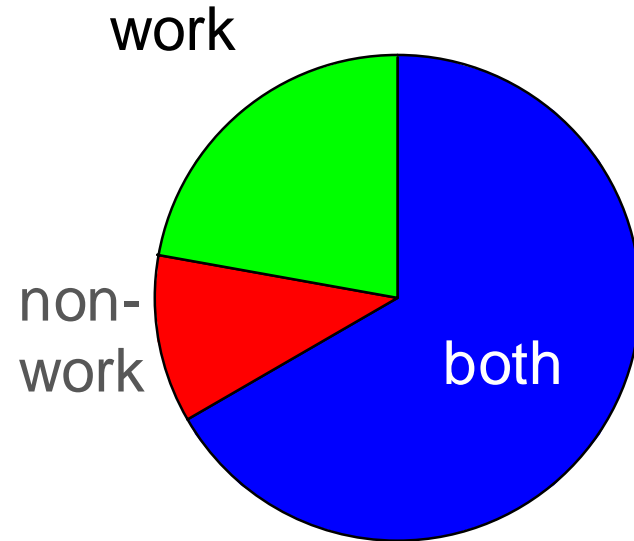
## Which technologies

Authoring tools	39
LMS	33
Synchronous	35
Packaged content	35
Custom content	53
Hosting service	19
Streaming video	27
LCMS	20
Learning Obj. authoring	22
Mobile	16
Games	17
Satellite	3

# Personal learning



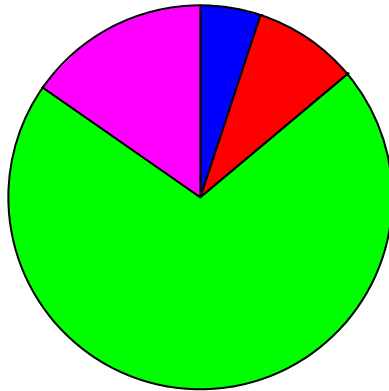
“What portion of your learning would you estimate is informal?”



“Where does your informal learning occur?”

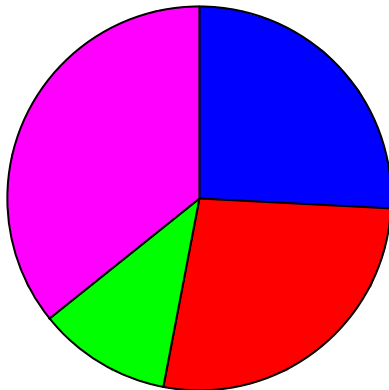
# Personal activities

## Weblogging

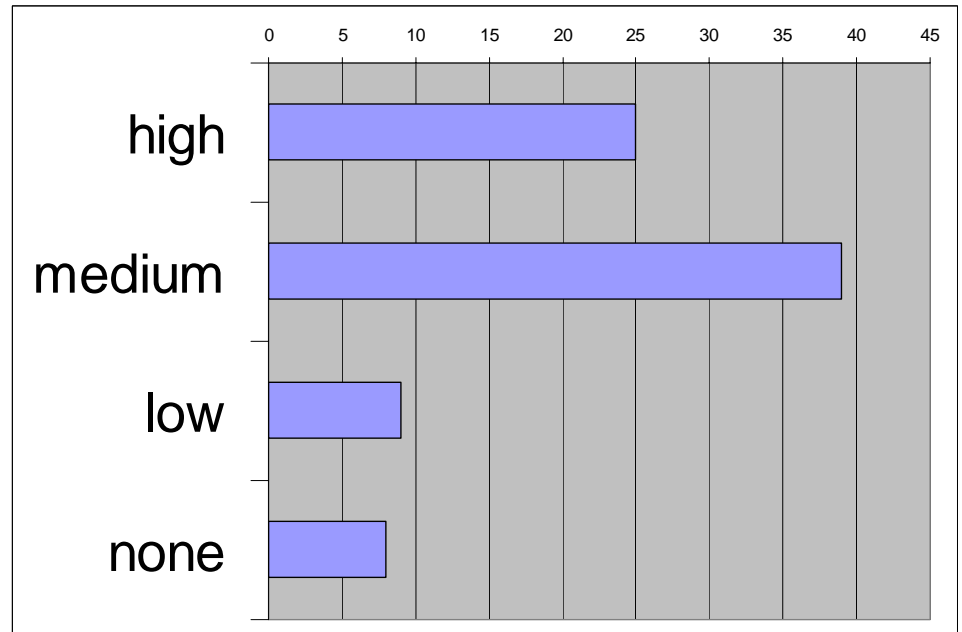


- frequent
- infrequent
- none
- occasional

## Special Interest Groups

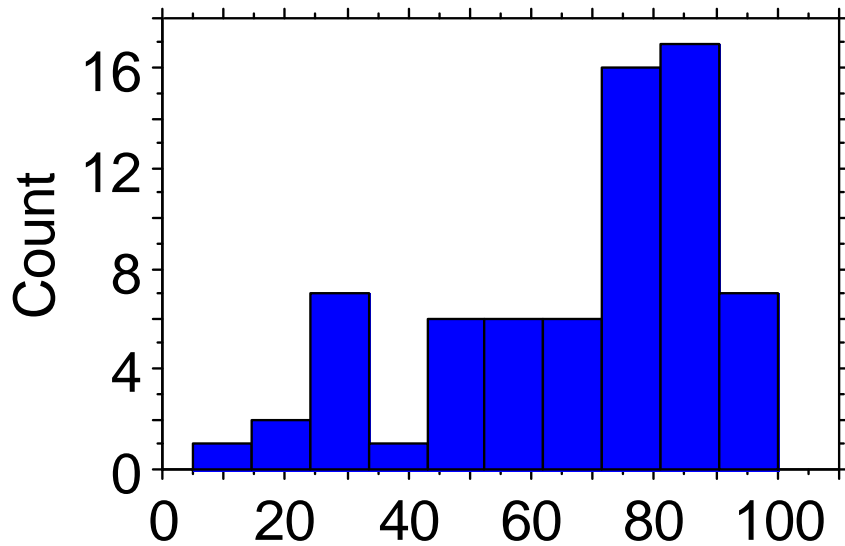


- frequent
- infrequent
- none
- occasional

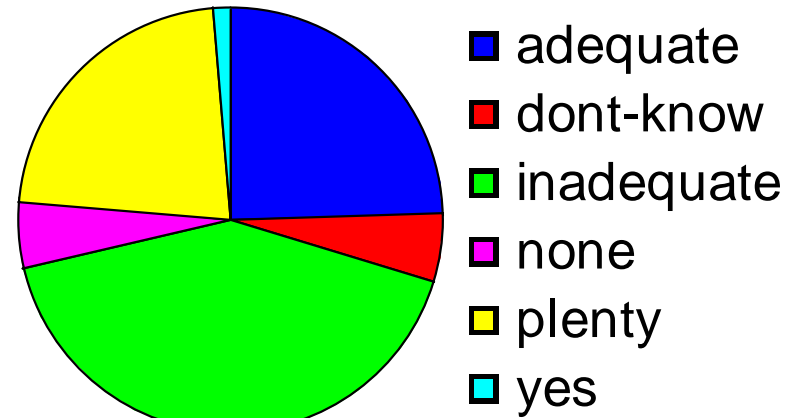


How valuable do you find virtual communities to be?

# Corporate learning

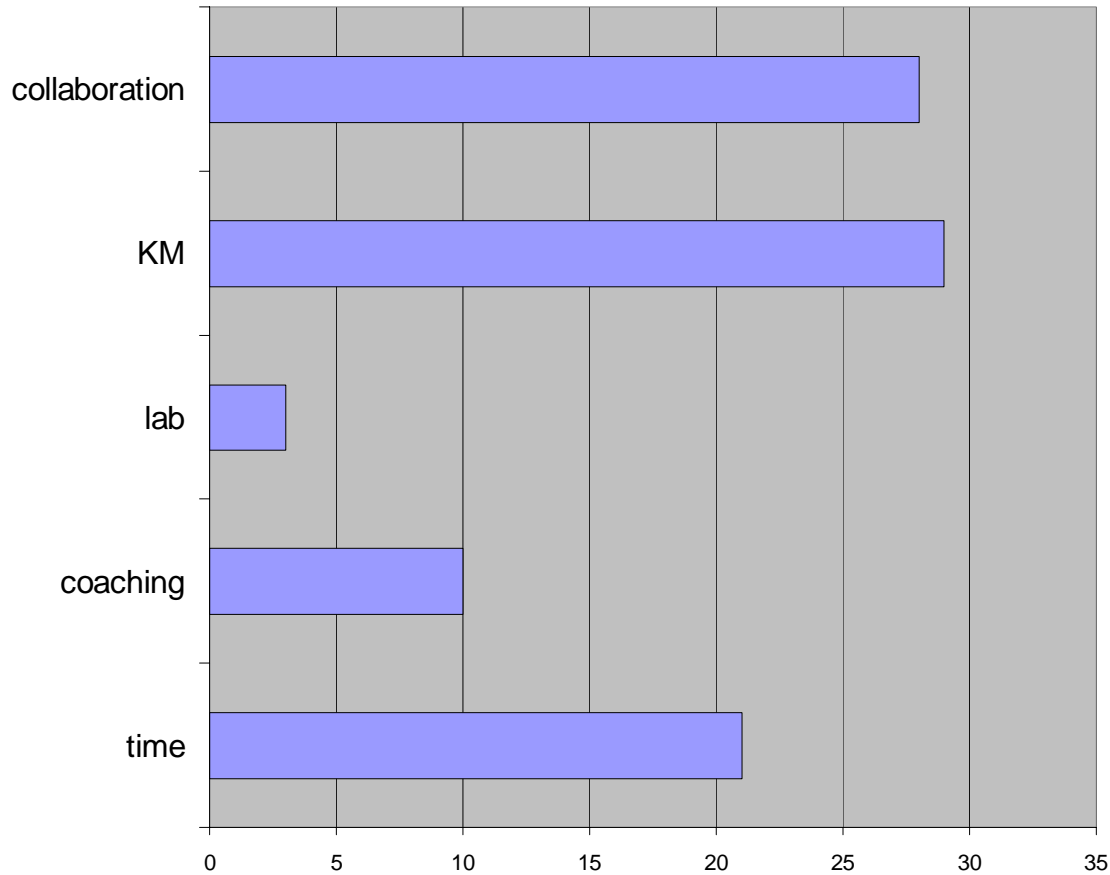


"What portion of your *organization's* learning would you estimate is informal?"

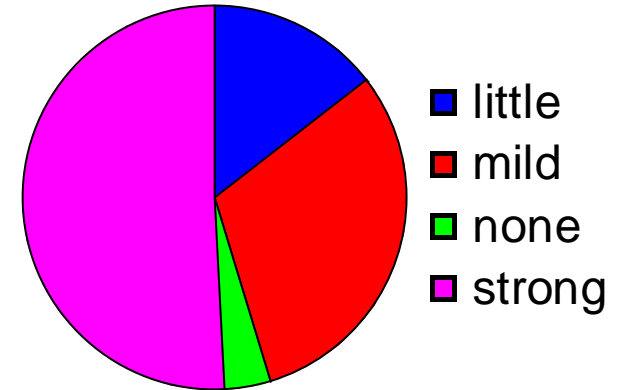


Does your organization provide enough time for informal learning?

# Organizational support & priority

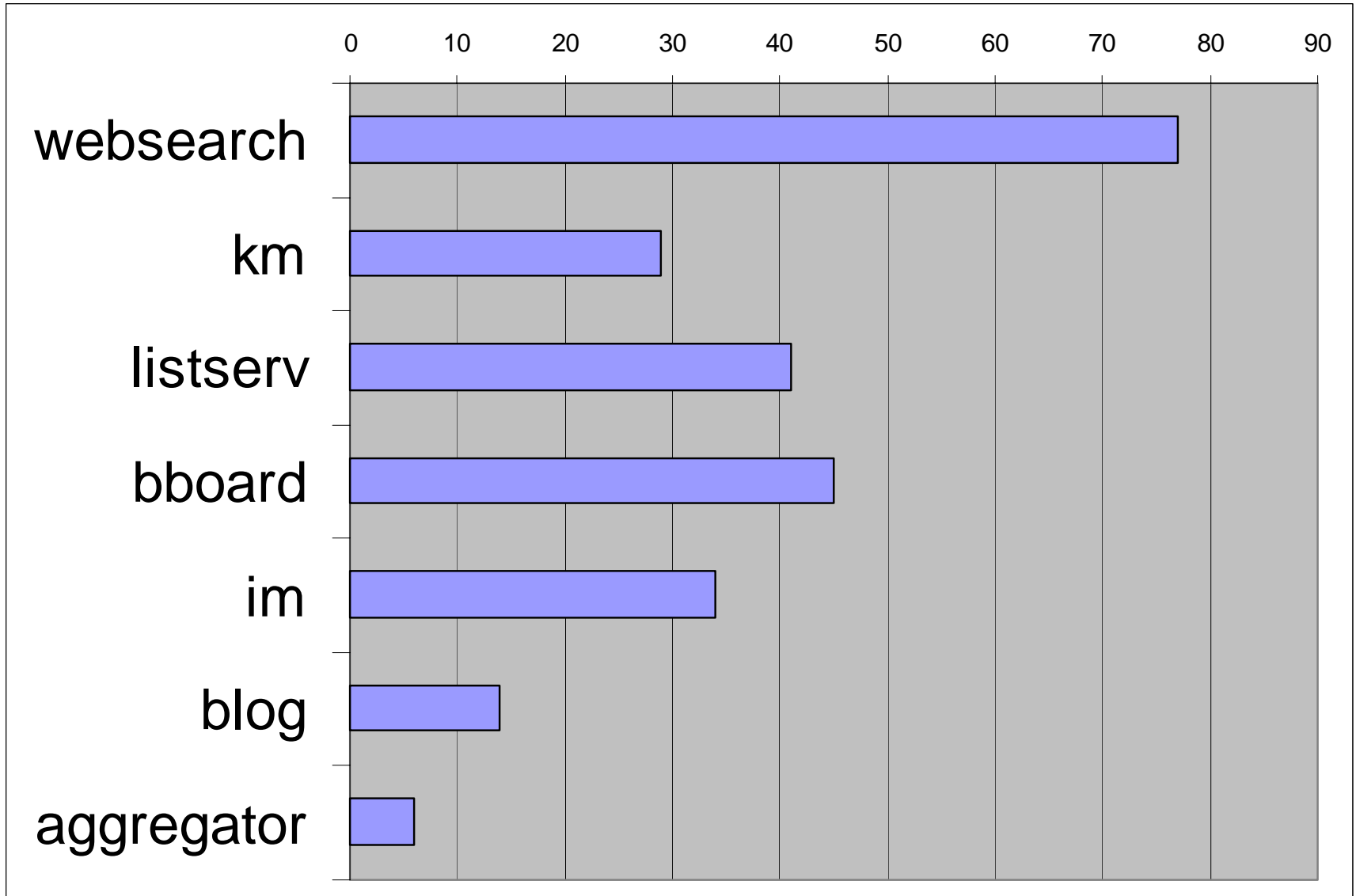


How does your organization support informal learning?

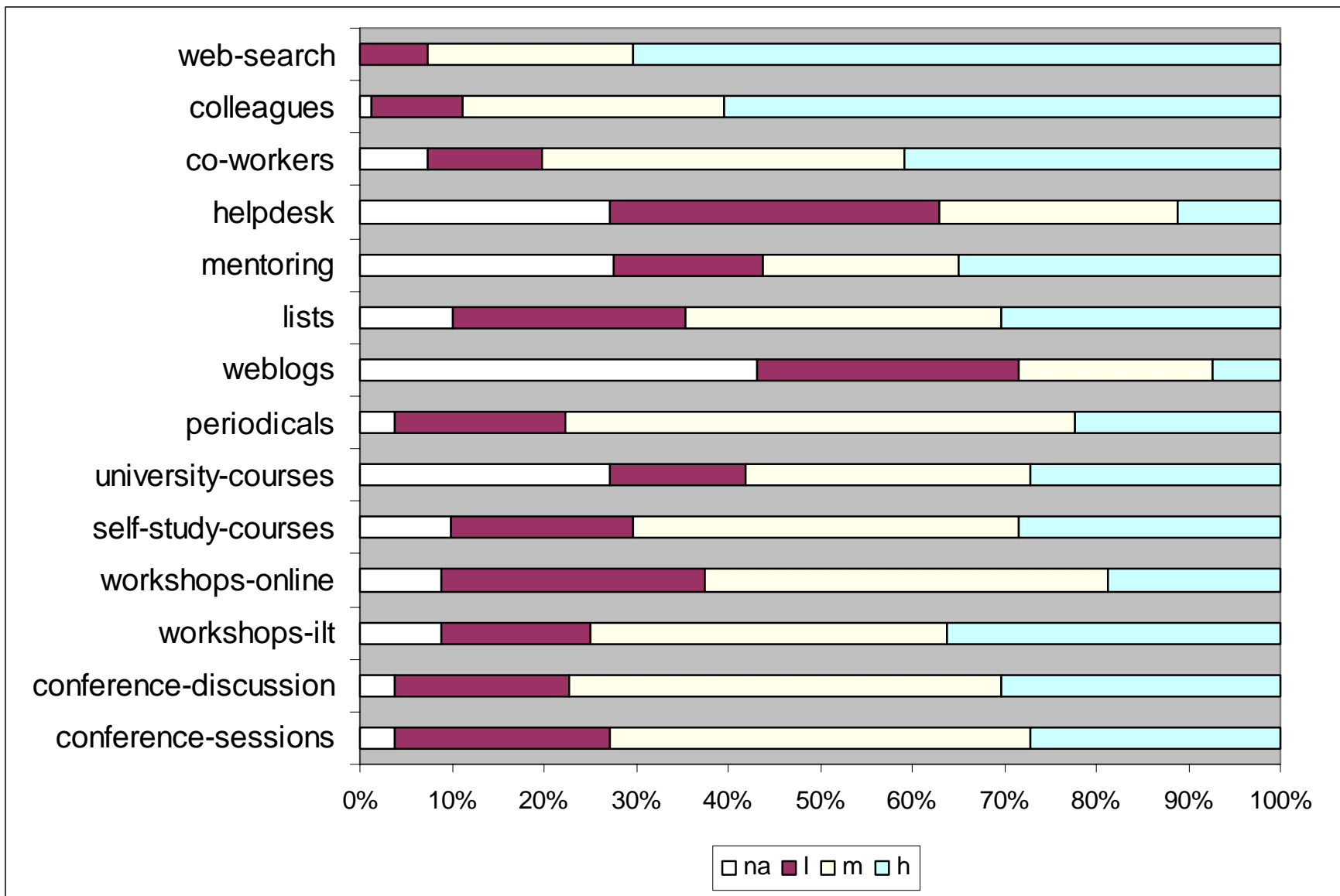


To what extent will informal learning be recognized/supported in your organization (next 2-3 years)

# Sources (used in the past week)



# Personal sources



# Organizational sources

